

EQUIPMENT CATALOG

Steeldeck NY Inc
141 Banker Street • Brooklyn • New York • 11222
www.steeldeckny.com • 1-877-60-STAGE

Steeldeck® is a registered trademark of Steeldeck® Industries Ltd.

EQUIPMENT LIST

Standard Steeldeck® Platforms	3
Triangles, Circles & Curves	4
Accessories : Legs, Couplers & Screwjacks	6
Accessories : Casters, Carts & Bracing	7
Accessories : Steps (Hook-on & box), Guardrails	8
Accessories : Bolt-on Posts, Appearance	9

For custom sizes or colors of any of the equipment we carry, please call us on 877-60-STAGE

STEELDECK® PLATFORMS : STANDARD RECTANGLES



Steeldeck® Platform : Construction Detail

Steeldeck® platforms consist of a steel truss frame with a socket in each corner and a plywood top. The truss frame is made up from a top chord, a bottom chord, and a distinctive zigzag web.

The ¾" birch faced plywood top is screwed to the top chord. The top is backed with flame retardant sound absorbing foam.

The 'cornerpost' takes a 1 ½" Sch. 40 pipe leg which is held in position with an M12 compression hand knob.

Platform Size	Carrying Weight	Load Capacity*
4'0 x 8'0 (6-leg)	166lbs	250 psf
4'0 x 8'0 (Arena)	164lbs	200 psf
4'0 x 8'0 (5-Bar)	165lbs	150 psf
3'0 x 8'0	132lbs	200 psf
2'0 x 8'0	100lbs	200 psf
1'0 x 8'0	69lbs	200 psf
4'0 x 7'0 (Arena)	147lbs	200 psf
4'0 x 7'0 (5-Bar)	147lbs	150 psf
3'0 x 7'0	121lbs	200 psf
2'0 x 7'0	92lbs	200 psf
1'0 x 7'0	62lbs	200 psf
4'0 x 6'0	132lbs	200 psf
3'0 x 6'0	100lbs	200 psf
2'0 x 6'0	79lbs	200 psf
1'0 x 6'0	56lbs	200 psf
4'0 x 5'0	120lbs	200 psf
3'0 x 5'0	89lbs	200 psf
2'0 x 5'0	69lbs	200 psf
1'0 x 5'0	48lbs	200 psf
4'0 x 4'0	91lbs	200 psf
3'0 x 4'0	71lbs	200 psf
2'0 x 4'0	57lbs	200 psf
1'0 x 4'0	38lbs	200 psf
3'0 x 3'0	57lbs	200 psf
2'0 x 3'0	46lbs	200 psf
1'0 x 3'0	33lbs	200 psf
2'0 x 2'0	34lbs	200 psf

STEELDECK® PLATFORMS : TRIANGLES, CIRCLES & CURVES



Rectangles and Triangles



Circles and Curves

Platform Size	# of Pieces	Carrying Weight	Load Capacity*
4'0 x 8'0 Triangle	1 (RHS, LHS)	99lbs	200 psf
4'0 x 6'0 Triangle	1 (RHS, LHS)	77lbs	200 psf
4'0 x 4'0 Triangle	1	60lbs	200 psf
2'0 x 2'0 Triangle	1	25lbs	200 psf
32'0 circle	12 @ 4'0 x 8'0 16 @ special curves	@ 138lbs per specials	150 psf
24'0 circle	8 @ 4'0 x 8'0 8 @ special curves	@ 139lbs per specials	150 psf
20'0 circle	6 @ 4'0 x 8'0 8 @ special curves	58lbs per small special 122lbs per large special	150 psf
16'0 circle	6 @ 4'0 x 8'0 8 @ special curves	@ 134 lbs	150 psf
12'0 Circle	4 quads @ 6'0 x 6'0	151lbs per quad	150 psf
10'0 Circle	4 quads @ 5'0 x 5'0	111lbs per quad	200 psf
8'0 Circle	4 quads @ 4'0 x 4'0	60lbs per quad	200 psf
6'0 Circle	2 halves	88lbs per half	200 psf
4'0 Circle	1	81lbs	200 psf
32'0 circle landing platform	1	@ 108lbs	150 psf
24'0 circle landing platform	1	@ 109lbs	150 psf
20'0 circle landing platform	1	@ 112lbs	150 psf
16'0 circle landing platform	1	@ 81lbs	150 psf
12'0 circle landing platform	1	@ 125lbs	150 psf
10'0 circle landing platform	1	@ 126lbs	150 psf
8'0 circle landing platform	1	@ 61lbs	150 psf
6'0 circle landing platform	1	@ 47lbs	150 psf
4'0 circle landing platform	1	@ 53lbs	150 psf

- * Load Capacities for Uniformly Distributed Load
 -For a maximum height of 4'0 (with plain legs)
 -For a maximum height of 3'6 (using shared legs)
 -For a maximum height of 8'0 (braced using shared legs)

-ALL STEELDECK® PLATFORMS CAN SUPPORT OR EXCEED A UNIFORMLY DISTRIBUTED LOAD OF 125PSF AT A PLATFORM HEIGHT OF 4'-0" USING EITHER FLANGED OR STANDARD LEGS.

-FOR PLATFORM HEIGHTS IN EXCESS OF 8'-0", CONSULT A REGISTERED DESIGN PROFESSIONAL/STEELDECK® NY INC.

-LOADS IN EXCESS OF 150PSF ARE GENERALLY SUSCEPTIBLE TO HIGH LOAD CONCENTRATIONS AND/OR STABILITY CONCERNS; THEREFORE, IN THESE INSTANCES IT IS RECOMMENDED THAT THE USER CONSULTS A REGISTERED DESIGN PROFESSIONAL/STEELDECK® NY INC. TO ENSURE THAT THE PROJECT-SPECIFIC SUPPORT/ BRACING ARRANGEMENT IS SUITABLE FOR THE PROJECT-SPECIFIC LOADING AND USE.

-Exclusions of the product rating herein include, but are not limited to :
Array dimensions less than 8'-0", large concentrated loads, large lateral loads, elements tied down to the platforms, non horizontal deck surfaces, or surfaces that are uneven, unlevel or non-rigid. For use of the decks in any of the aforementioned conditions, or in any other non-typical cases, the user should consult a registered design professional.

-FOR FURTHER DETAILS, A LOAD RATING LETTER OF APPROVAL AND AN ACCOMPANYING CALCULATION REPORT ARE AVAILABLE UPON REQUEST.

ACCESSORIES :

	<p>LEGS</p> <p>Steel tube (1 1/2" Sch. 40) legs are used in our patented square corner posts, held in position with an M12 compression hand knob.</p> <p>Plastic "feet" slot into the bottom of the pipe legs which protect the floor that the deck stands upon.</p> <ul style="list-style-type: none"> • Standard Legs : Sizes up to 4'0 in height come free of charge with the deck you rent from us. • Stock sizes are in 6", 7" and 8" increments. • Plain legs : Each platform takes four plain legs at a variety of heights. • Flanged legs : Legs can be supplied with a fully welded flange to support adjacent decks ("shared" legs). The flanged leg allows one leg to support one, two or three neighboring decks. This reduces set up time and allows screwjacks/bracing to be used. • Special Legs : Any size of leg can be cut for your project, for an additional fee <p>Angled legs can be provided to create a raked stage.</p>
<p>Carrying Weight : 2.7lbs/ft</p>	
	<p>COUPLERS</p> <p>Couplers are essentially a demountable flange and allow up to four adjacent decks to be supported by a single leg. This reduces set up time and allows screwjacks/bracing to be used. The coupler attaches to one leg and enables this one leg to support one, two or three neighboring decks.</p>
<p>Carrying Weight : 3lbs</p>	
	<p>SCREWJACKS</p> <p>Adjustable baseplates "screwjacks" can be used to level the deck on uneven ground and to spread the load.</p> <p>"Fixed plate" or "articulated plate" screwjacks can be provided in 1'0 or 2'0 heights.</p>
<p>2'0 Carrying Weight : 8lbs</p>	
<p>1'0 Carrying Weight : 5lbs</p>	

	<p>ROLLING RISERS</p> <ul style="list-style-type: none"> • The standard caster comes with an 8” diameter wheel and a spigot which slides neatly into a leg • This allows adjustment of the height of your rolling riser from about 16 ½ ” upwards • Used in conjunction with the flanged leg system you can effectively create rolling risers of any size or shape <p>8” Carrying Weight : 8lbs</p> <p>6” Carrying Weight : 6lbs</p> <p>Load Capacity : 1100lbs each</p>
	<p>12” ROLLING RISERS</p> <ul style="list-style-type: none"> • The 12” rolling caster slides into the corner-post of the platform • Perfect for drum risers <p>Carrying Weight : @ 7lbs</p> <p>Load Capacity : 250lbs each</p>
	<p>CARTS</p> <p>Casters can be inserted into the deck corner-post to create a rolling cart for a stack of platforms or other equipment.</p> <p>Carrying Weight : @ 8lbs</p> <p>Load Capacity : 1100lbs each</p>
	<p>BRACING</p> <p>For platforms over 4’0 high, bracing is recommended (dependent upon usage). Steel scaffolding (1 ½” Sch. 40) bracing pipe is used with cheeseboroughs (fixed and swivel type).</p> <p>Carrying Weight : 2.7lbs/ft</p>
	<p>BRACING CLIPS “CHEESEBOROUGHS”</p> <p>Fixed (90 degree) cheeseboroughs attach chase (horizontal) bracing and swivel cheeseboroughs attach cross (diagonal) bracing.</p> <p>Fixed Carrying Weight : 2.5lbs</p> <p>Swivel Carrying Weight : 3.5lbs</p>



HOOK-ON STEP UNITS WITH HANDRAILS

Stock step units have a 6", 7", or 8" rise, dependent on code or space requirements

Available from 1'0 to 4'0 high

For a higher stairway, simply insert an intermediate deck as a landing platform and continue with another set of steps.

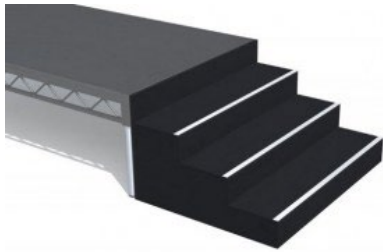
They have a steel frame, powder coated black, with black wooden step inserts

All steel steps are provided with a handrail, in either plain or balustrade styles.

Carrying Weight 14" to 21" high : 38lbs to 67lbs

Carrying Weight 2'0 to 32" high : 69lbs to 88lbs

Carrying Weight 3'0 to 4'0 high : 123lbs to 210lbs



STEPS-WOODEN BOX STEPS

- Stock step units have a 6", 7" or 8" rise, dependent on code or space requirements

- Available from 7" to 2'0 high

- Constructed from 3/4" plywood, painted black with an upstand to mask the edge of the platform

- Are not supplied with guardrails, but guardrails can be priced upon request

Carrying Weight 12" to 16" high : 32lbs

Carrying Weight 18" to 2'0 high : 70lbs



GUARDRAILS

These balustrade style guardrails conform to the 4" sphere test.

The tops of the guardrails are constructed from 1 1/2" x 1 1/2" steel tube, and the pickets are from 3/4" x 3/4" tube. Powder coated black.

The simple attachment using a backplate allows the guardrail to be clamped to any position along the platform frame.



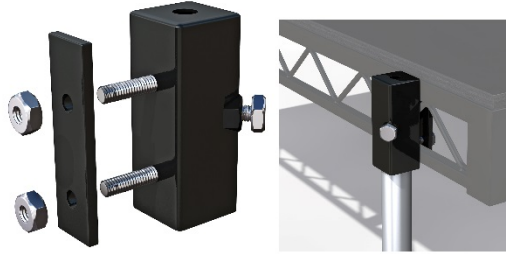

Standard height rails stand 42" above platform height

Carrying Weight 4'0 standard : 45lbs

Carrying Weight 3'0 standard : 37lbs

Carrying Weight 2'0 standard : 27lbs

Carrying Weight 1'0 standard : 19lbs

	<p>Sightline or low rails, stand 26" above platform height</p> <p>Carrying Weight 4'0 low : 33lbs</p> <p>Carrying Weight 3'0 low : 27lbs</p> <p>Carrying Weight 2'0 low : 20lbs</p> <p>Carrying Weight 1'0 low : 14lbs</p>
	<p>MOVEABLE HANDRAIL POST</p> <ul style="list-style-type: none"> • This is the same construction as the Steeldeck® corner post, but it is supplied with a backplate, so that it can be bolted in any position along the edge of the platform • It allows for a simple handrail to be attached to the side of the platform <p>Carrying Weight : 4lbs</p>
	<p>BOLT-ON CORNER POST</p> <ul style="list-style-type: none"> • This is the same construction as the Steeldeck® corner post, but it is supplied with a backplate, so that it can be bolted in any position along the edge of the platform • It provides an additional leg position where the platform has to cantilever to clear an obstruction <p>Carrying Weight : 4lbs</p>
	<p>APPEARANCE*</p> <ul style="list-style-type: none"> • Hard Fascias : From ¼" sintra, black is standard but other colors are available • Soft Fascia/Drape: From 8oz Duvetyne, black is standard but other colors are available • Carpet : Dark gray or black exhibition cord comes as standard but other colors and grades are available • Vinyl Dance Floor: Black is standard but other colors are available <p>*There may be a lead time for certain items/colors, please call us for information</p>

ALWAYS FOLLOW MANUFACTURERS SET UP INSTRUCTIONS.

© STEELDECK® NY INC.

All rights reserved. All materials contained herein are owned by and proprietary to Steeldeck® NY, Inc., are protected by United States copyright law, and may not be reproduced, duplicated, distributed, transmitted, displayed, published or broadcast in whole or in part, in print, electronic form, or any other form or by any means without the prior written permission of Steeldeck® NY, Inc. You may not alter or remove any trademark, copyright or other notice from copies of the content.

Steeldeck® NY Inc
 141 Banker Street • Brooklyn • New York • 11222
www.steeldeckny.com • 1-877-60-STAGE

Steeldeck® is a registered trademark of Steeldeck® Industries Ltd.